



Ferenc Jordan, Trento, Italy / panel chair

# BIOMEDICINE 1

Panel	Expr5	Quality of the research performance and Impact	Research management	The development potential of UoA	The economic and social impact of the research in Lithuania	The physical infrastructure of the UoA	Overall score	UoA
B1	GTC Botanikos institutas	2	2	3	3	3	3	3 GTC_BI
B1	GTC Ekologijos institutas	3	2	2	4	3	3	3 GTC_EKOI
B1	KU Jūros mokslų ir technologijų mokslų jungtinis padalinys	4	4	4	4	5	4	4 KU_JTMJP
B1	ŠU ŠU biomedicinos ir žemės ūkio mokslų	2	2	2	3	2	2	2 ŠU_BŽŪ
B1	VDU VDU biomedicinos mokslų srities VV	4	4	4	4	5	4	4 VDU_BMS
B1	VU Gamtos mokslų fakultetas - BIO	3	2	4	3	3	3	3 VU_GF_Bio

3

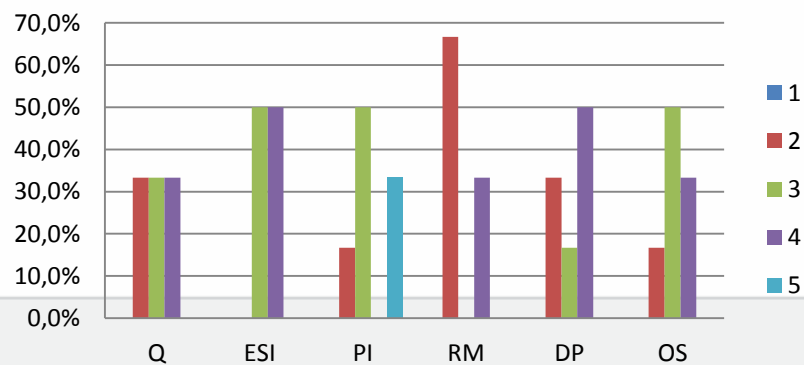
2.7

3.12

3.5

3.5

## Other Biomedicine



## Research quality:

- Heterogeneous, excellent researchers and also low-visibility research
- High quantity and lower quality of publications
- Collaboration and networking sometimes suboptimal
- Flexible organizations perform better

## Infrastructure:

- Generally, very good
- Data accessibility varies
- Equipment and personnel sometimes unbalanced
- Equipment often underused and unknown

## Mobility:

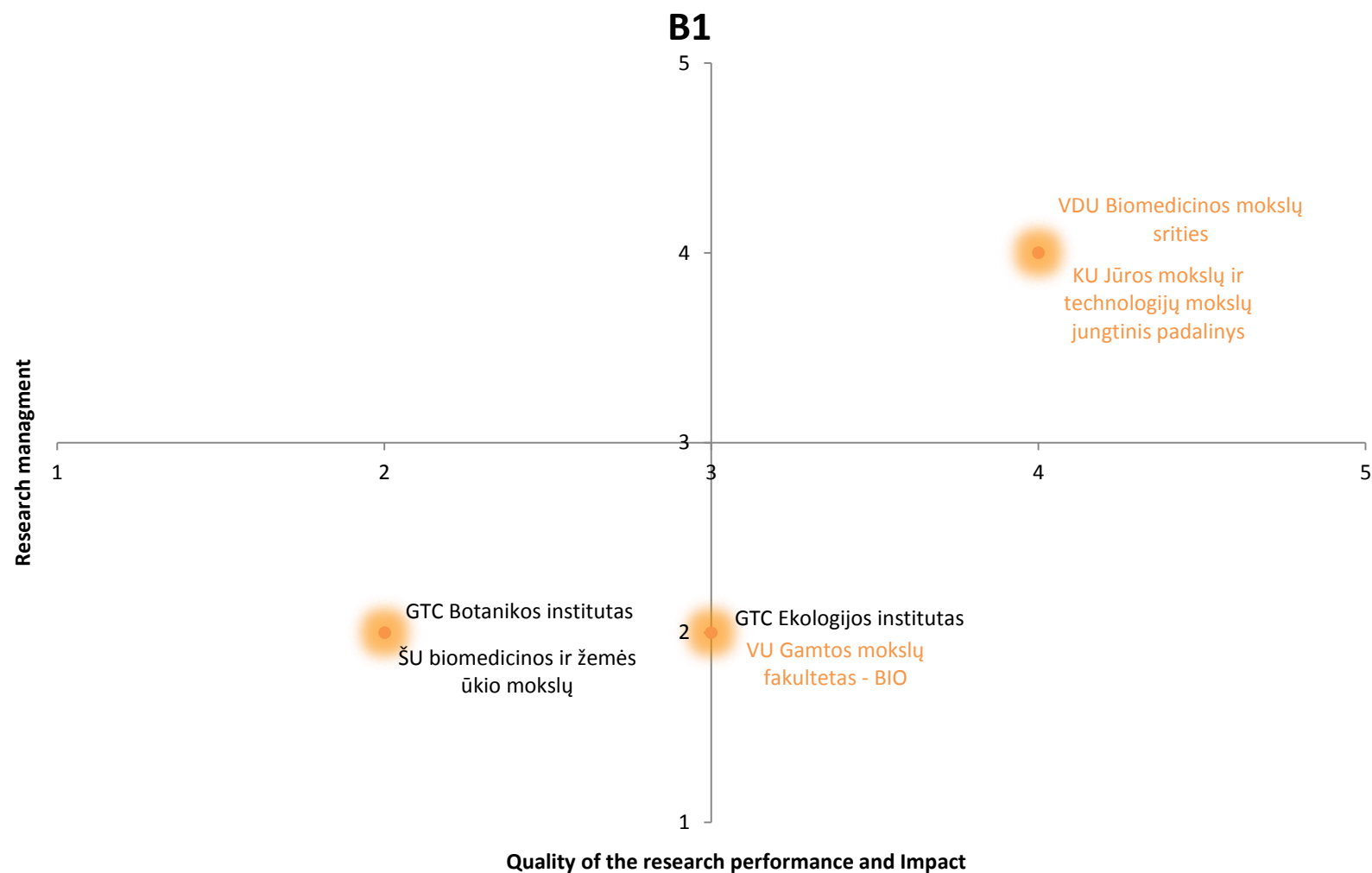
- Very low level, especially the number of incoming visitors
- Orientation could be geographically diversified
- Important for both young researchers and senior leaders

## Career development and management:

- Theses in English
- More freedom for bravest students
- Self-confidence to be improved (leadership in publications and applications)
- Flexibility and performance-based feedback are important

## Recommendations:

- Mobility
- Flexibility
- Self-confidence, networking







OUR EVIDENCE – YOUR DECISIONS

